



Fire Testing Laboratory

Surface Burning Characteristics
ASTM E-84
ALPHA SYSTEMS INC.

Date: 10/16/98

Project No: H-221

By: RAC

MATERIAL TESTED:

Samples submitted for evaluation were described as follows:

ALPHASEAL 5200

2 PART POLYURETHANE ADHESIVE

METHOD OF SUPPORT:

Two (2) nominal 1/2" thick X 2" wide strips of test material spray applied to 1/4" inorganic reinforced cement board and 4" to either side of the center line.

RESULTS:

<u>TEST NO #</u>	<u>FLAME SPREAD</u>	<u>SMOKE DEVELOPED</u>
1	29.51	312
2	31.57	353
3	29.52	418

FLAME SPREAD INDEX*

<u>MATERIAL TESTED</u>	<u>FLAME SPREAD</u>	<u>SMOKE DEVELOPED</u>
ALPHASEAL 5200	30	360

* Flame Spread Index is the average rounded to the nearest multiple of five.

LABORATORY RESPONSIBILITY

National Gypsum Company makes no judgment of product suitability for its intended end use. Product acceptance of field installations is usually the prerogative of the authority having jurisdiction.

Report by:

R.A. Costolnick
Construction Project Engineer

Reviewed by:

R.J. Menchetti
Group Manager, Testing/Systems



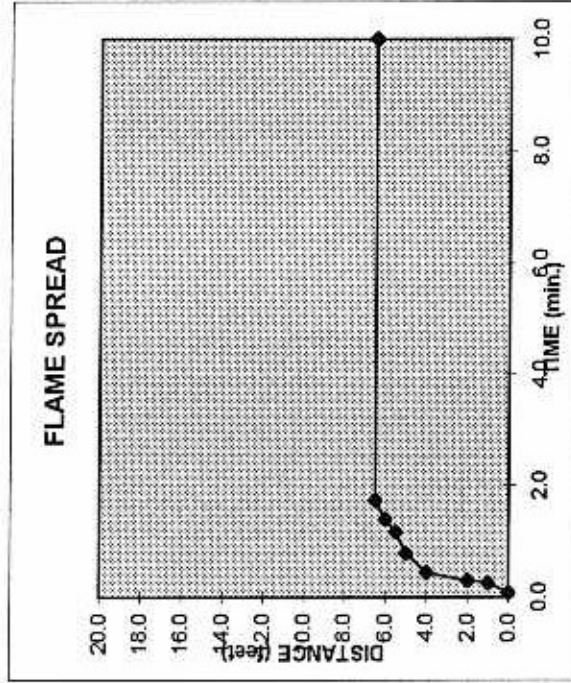
DATA

DATE 10/16/98



TEST #: FH-1150-2
 CLIENT: ALPHA SYSTEMS
 PROJECT #: H-221
 MATERIAL: ALPHASEAL 5200
 2 PART POLYURETHANE
 METHOD OF SUPPORT: SPRAY APPLIED TO RCB
 REMARKS: MELT OUT OVER BURNER
 AT 1:16

FLAME SPREAD- 31.57
 AREA UNDER THE CURVE (min.-ft.) 61.30
 SMOKE DEVELOPED- 353.00



#	TIME (Min.)	TIME (Sec.)	DISTANCE (Feet)
1	0	5	0.0
2	0	15	1.0
3	0	18	2.0
4	0	26	4.0
5	0	47	5.0
6	1	10	5.5
7	1	24	6.0
8	1	44	6.5
9	10	0	6.5
10			
11			
12			
13			
14			
15			
16			
17			
18			
19			
20			

WITNESSED BY: *[Signature]*

ALPMA
10/16/98
1158-2
353
6.0 m²

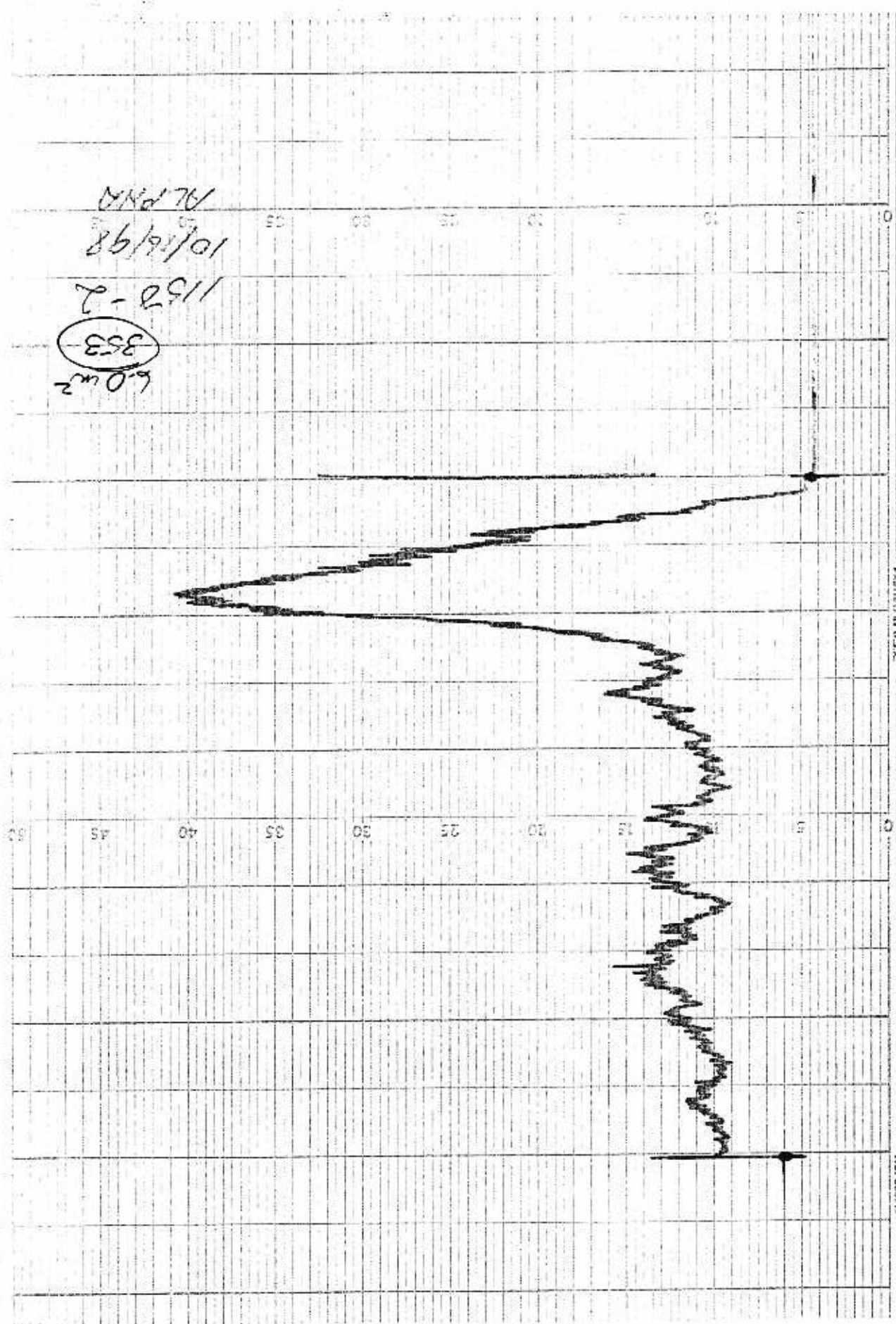


FIGURE 10, U.S.A.

No. 60718