

TECHNICAL DATA SHEET

FOLDING VENT

FOLDING VENT is a revolution in residential roof ventilation. This patent pending design creates an ease of installation and a convenience in packaging unavailable to the roofing industry to-date.

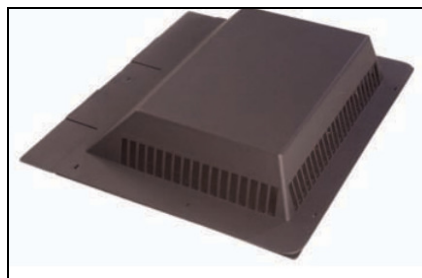
FOLDING VENT is comprised of a unique rust free durable copolymer.

Product features:

- **Textured Surface!**
- **Fully Screened To Protect Against Rodents, Insects and Birds!**
- **Extra-Large Flange Features Pre-Dilled Nail Holes For Easy Installation!**
- **Free Air Space of 50 Square Inches!**
- **Available In Select Shingle Colors!**
- **Use On 3/12 to 12/12 Roof Pitch!**
- **Top Cover Has Grid To Keep Birds Out!**
- **Box Has Front Panel Flap That Can Be Nailed To Roof Slope To Hold Box In Place During Installation!**
- **Stacks Tightly For Warehouse Space Savings And Less Space In Customer Truck!**
- **Easily Folds To Closed Position For Use!**
- **Clean Low Profile Finished Appearance!**

Product Specifications:

Part Number	Color	Length	Width	Height	Rough Opening
MFAVBLCTN	Black	19.75"	18.125"	3.50"	13.25" x 11.25"
MFAVBRCTN	Brown	19.75"	18.125"	3.50"	13.25" x 11.25"
MFAVDCTN	Weathered Wood	19.75"	18.125"	3.50"	13.25" x 11.25"



Installation Instructions:

Folding Vent needs to be installed 24" from the top of the ridge line directly between two rafters. After locating this position, drill a hole from the inside of the roof in order to create a circular cut slightly smaller than the opening of the vent base. Place the top of the vent parallel to the ridge; making sure to overlap the existing shingle. Secure using sufficient length roofing nails aligned with pre-drilled holes on vent.